

February 29, 2012, Final

American Red Cross Capital Region Chapter Approval: _____

Date: _____

Yolo County EC ARES Approval: _____

Date: _____

Amendments Approved: _____

Date: _____

**Yolo County Office of the American Red Cross Capital Region Chapter -Yolo County
Amateur Radio Emergency Services Memorandum of Understanding**

The Emergency Services Coordinator of the American Red Cross Capital Region Chapter (CRC), Yolo County office (Yolo Red Cross) has established an Amateur Radio Communications Team staffed by members of the Yolo County Amateur Radio Emergency Services (Yolo County ARES) Team. This Memorandum of Understanding (MOU) defines the roles of these two organizations as they prepare for and respond to disaster relief situations of all levels, render assistance and service to victims of disaster, as well as other services for which cooperation may be mutually beneficial. This MOU follows the concepts contained in the American Radio Relay League (ARRL), March 25, 2010, American Red Cross MOU (ARRL website: http://www.arrl.org/files/media/News/ARRL-ARC_MoU.pdf).

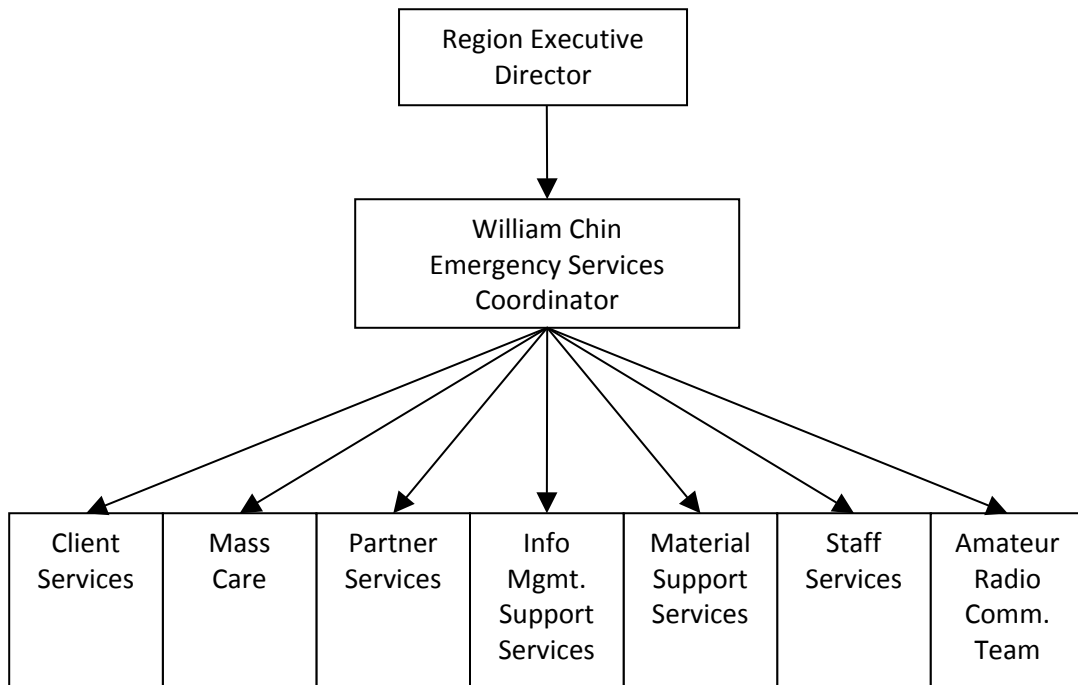
The following text describes the responsibilities of the Emergency Services Coordinator of the CRC, with respect to Yolo County ARES. In addition, the responsibilities of Yolo County ARES, its Emergency Coordinator (EC), Assistant Emergency Coordinators (AECs) and members are described. This MOU also addresses the following:

- Organization Chart for Yolo Red Cross;
- Licenses and Certificates required for individuals participating with the Yolo Red Cross Communications Team;
- Continuing Education for members the Yolo County ARES Team participating on the Yolo Red Cross Communications Team; and
- Protocol for activating Yolo County ARES.

Planning the Disaster Response of the Yolo County ARES to A Yolo Red Cross Call Out

The CRC's Emergency Services Coordinator has established this MOU with Yolo County ARES that defines the American Red Cross Standard Operating Procedures (SOP) used in emergency response, and identifies communication resources that would be employed in times of emergencies or disasters.

Organization Chart for the Capital Region Chapter



Mission of the Yolo County ARES

The principle mission of Yolo County ARES is to provide emergency communications for the communities within the County of Yolo when called upon.

General Statement of Purpose for ARES

In Section 97.1 of the Amateur Radio Service rules, the FCC describes the fundamental purpose of the Amateur Service, which includes these five principles:

1. Recognition and enhancement of the value of the Amateur service to the public as a voluntary noncommercial communication service, particularly with respect to providing emergency communications.
2. Continuation and extension of the Amateur's proven ability to contribute to the advancement of the Radio art.
3. Encouragement and improvement of the Amateur Radio service through rules which provide for advancing skills in both the communications and technical phases of the art.
4. Expansion of the existing reservoir within the Amateur Radio service of trained operators, technicians and electronics experts.
5. Continuation and extension of the Amateur's unique ability to enhance international goodwill.

The Emergency Communications Plan of Yolo County ARES

The Emergency Communications Plan of Yolo County ARES endorses and promotes all of the above statements. The Emergency Communications Plan addresses the role of Yolo County ARES activities in potential emergency situations, and with the various government and non-government agencies, which may request its services. It will establish emergency response procedures for Yolo County ARES members to follow, depending on the type of emergency and the agency being served.

Most important, this Emergency Communications Plan is an ever-evolving guide for Yolo County ARES members to follow in emergency situations. Since each situation is unique, flexibility to provide an adequate response to each is a necessity.

The members of Yolo County ARES conduct periodic drills, training and instruction to ensure readiness in implementing the Yolo County ARES Emergency Communications Plan.

The Yolo County ARES Emergency Communications Plan is a resource for served local agencies to use to enlist Yolo County ARES services in emergency response situations.

Description of the Yolo County ARES Emergency Communications Plan

Yolo County ARES is composed of FCC licensed Amateur Radio operators who have voluntarily registered their capabilities and equipment for emergency communications duty. This service is provided under the guidance of the Yolo County ARES EC and its leadership team.

Yolo County ARES operates under federal regulations, which state that Amateur Radio public service communications are to be rendered without compensation of any kind.

The primary method of communication used by Yolo County ARES involves a Radio Plan using Amateur Radio HF, VHF and UHF frequencies. This Radio Plan used by Yolo County ARES lists repeaters for countywide operations and simplex for local, on-scene operations. Details of the Yolo County ARES Radio Plan can be found in the Emergency Communications Plan, which is available upon request. All of these facilities are used in emergency preparedness nets, training, drills, and emergency situations.

Appointment Process for Yolo County ARES Members Desiring to Assist the Yolo Red Cross with Communications in Support of Disaster Relief

Appointments of individuals assigned to the Yolo Red Cross Communications Team are made by the Yolo County ARES EC or AEC. Each member of the Yolo County ARES Team assigned to the Yolo Red Cross Communications Team shall carry and keep current the following license and certificates.

- Amateur Radio License
- Membership in the Amateur Radio Emergency Service (ARES)
- Certificate of passing the American Red Cross Introduction to Shelter Operations Course

It is acknowledge that individuals appointed to the Yolo Red Cross Communications Team shall have completed a criminal background check. The criminal background check shall be performed by a local law enforcement agency. The background check is to be conducted at no cost to the Yolo County ARES Team member.

Continuing Education for Members of the Yolo Red Cross Communication Team Members

The Yolo Red Cross Communications Team, which comprise of Yolo County ARES members, are trained through weekly announced and unannounced drills prescribed by the Yolo County ARES EC or AEC and may participate in Yolo Red Cross disaster preparedness drills as scheduled by the CRC's Emergency Services Coordinator.

Planning, Establishment and Operation of Yolo Red Cross Communications Center

The responsibility of the CRC's Emergency Services Coordinator is to establish a Communications Center within the Yolo Red Cross office located in Woodland, California. This facility will be staffed by members of Yolo County ARES on a day-to-day basis during a declared emergency or disaster. This facility will have the capabilities of operating radio frequencies assigned to American Red Cross and Yolo County ARES.

The CRC's Emergency Services Coordinator is responsible for the acquisition and inventory of communications equipment. Including, periodic testing and repair of said equipment. An annual report is to be prepared for the CRC's Emergency Services Coordinator by the Yolo County ARES EC or AEC describing the location and condition of the equipment.

Protocols for Activating Yolo County ARES

In the event of a disaster requiring the use of Amateur Radio communications to support American Red Cross operations within Yolo County, CRC's Emergency Services Coordinator will notify Yolo County ARES in accordance with a prearranged plan. Yolo County ARES will then alert, mobilize, and deploy its personnel to establish and maintain fixed, mobile, and portable Amateur Radio communications for local area and countywide radio coverage, and for point-to-point contact between American Red Cross officials, shelters, and other locations within Yolo County.

Yolo County ARES will supply the CRC's Emergency Services Coordinator with a continually updated ARES EC and AEC Contact List. The CRC will provide Yolo county ARES with a current copy of American Red Cross contact information for key local disaster services personnel with whom Yolo County ARES will work.